

# Estream 2.0 IGT Plus MICROCATHETER

Supervised by  
**Dr. Shinichi Hori**  
**Dr. Atsushi Hori**



## Microcatheter for TACE Transcatheter Arterial Chemo-Embolization

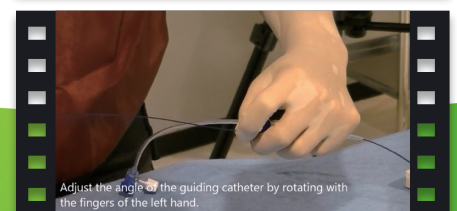
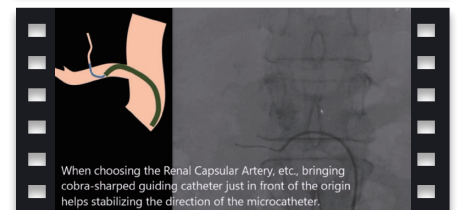
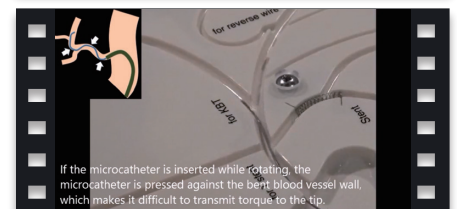
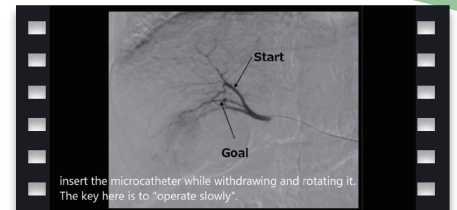
Designed for

# Wi-Fi technique

What's Wi-Fi technique?



Learn  
more!



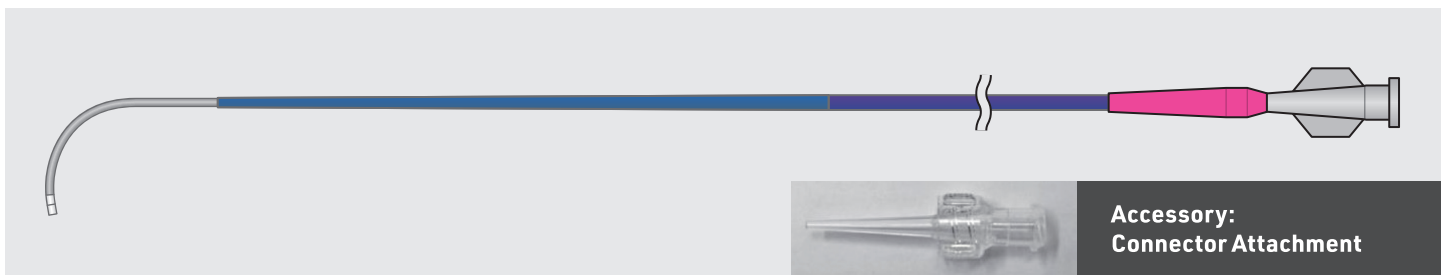
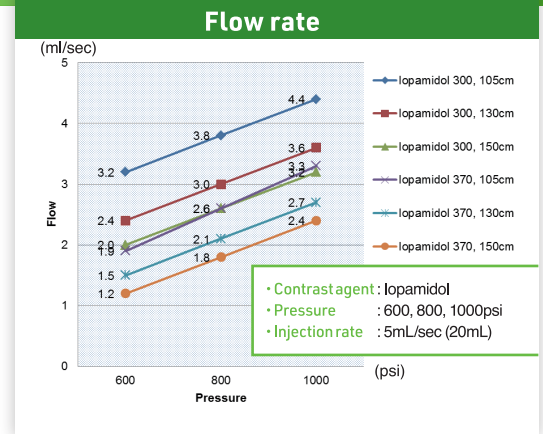
“Wi-Fi Technique” is the procedure without using micro guide wire, which was developed by Dr. Shinichi Hori.

# Estream 2.0 IGT Plus



## Wi-Fi technique

- Without using guidewire
- Speedy
- Cost Reduction



**Dr. Atsushi Hori's  
Comment**

Estream is a microcatheter capable of Wi-Fi technique (wireless, a technique to select blood vessels with a microcatheter without using guidewire). It has an excellent balance of flexibility and rigidity and can be manipulated like a guidewire to freely select peripheral blood vessels. The new coating on “Estream 2.0 IGT Plus” has reduced insertion resistance into blood vessels and greatly improved torque transmission even in tortuous vessels, enabling stress-free peripheral catheter operation. I hope you will experience the catheter that enables faster and safer treatment.

Catalog Number	O.D.		I.D.		Effective length	Tip	Pressure resistance	Max guide wire
	Distal	Proximal	Distal	Proximal				
HLEST105-IGT4					105 cm	Angled	6,985 kPa (1,000 psi)	0.018 in. (0.46 mm)
HLEST130-IGT4	2.0 Fr (0.68 mm)	2.85 Fr (0.95 mm)	0.020 in. (0.50 mm)	0.024 in. (0.62 mm)	130 cm			
HLEST150-IGT4					150 cm			

- Estream 2.0 IGT Plus  
 Medical Device: HL Microcatheter 3  
 Marketing Approval Number: 30400BZX00041000

Manufacturer: \_\_\_\_\_



**Hi-Lex Corporation**

1-12-28 Sakaemachi, Takarazuka,  
 Hyogo 665-0845, Japan

MADE IN JAPAN