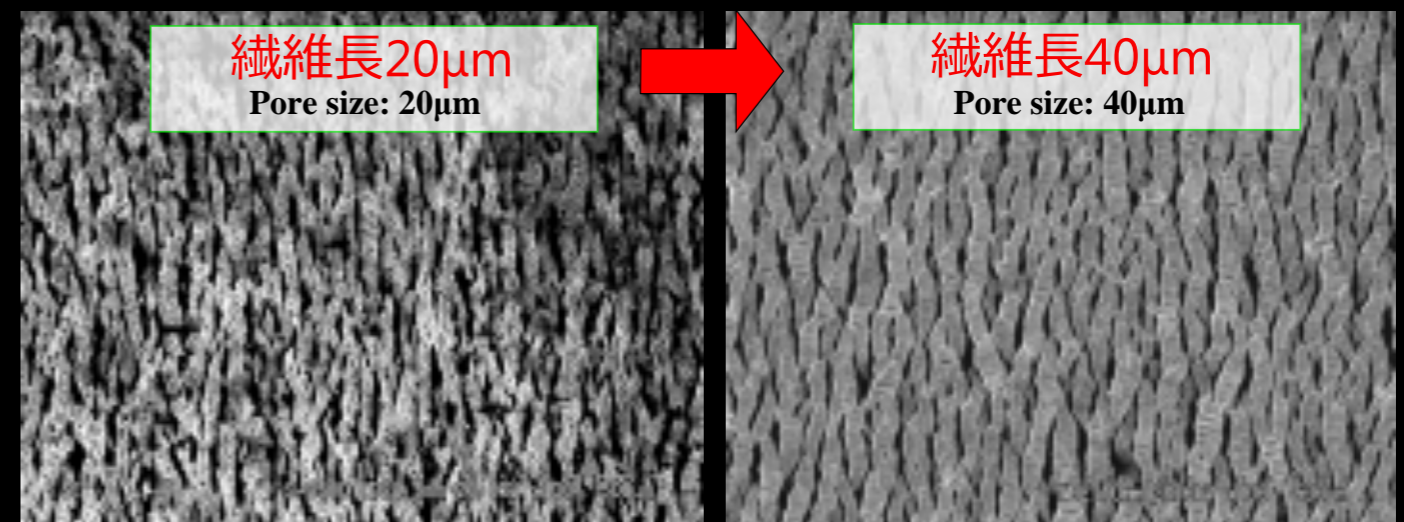
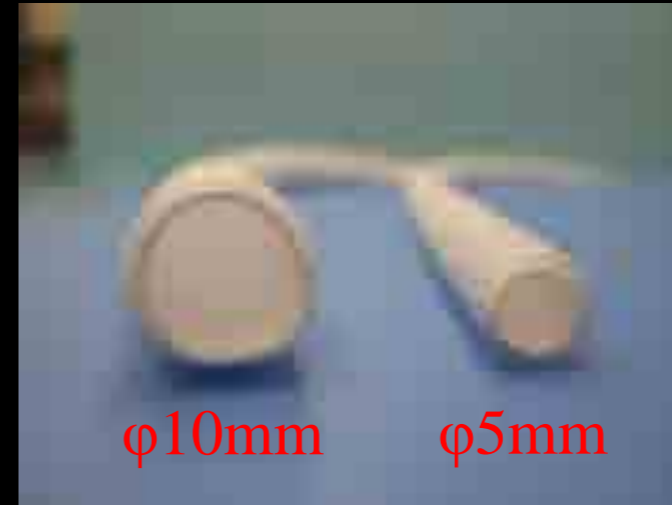
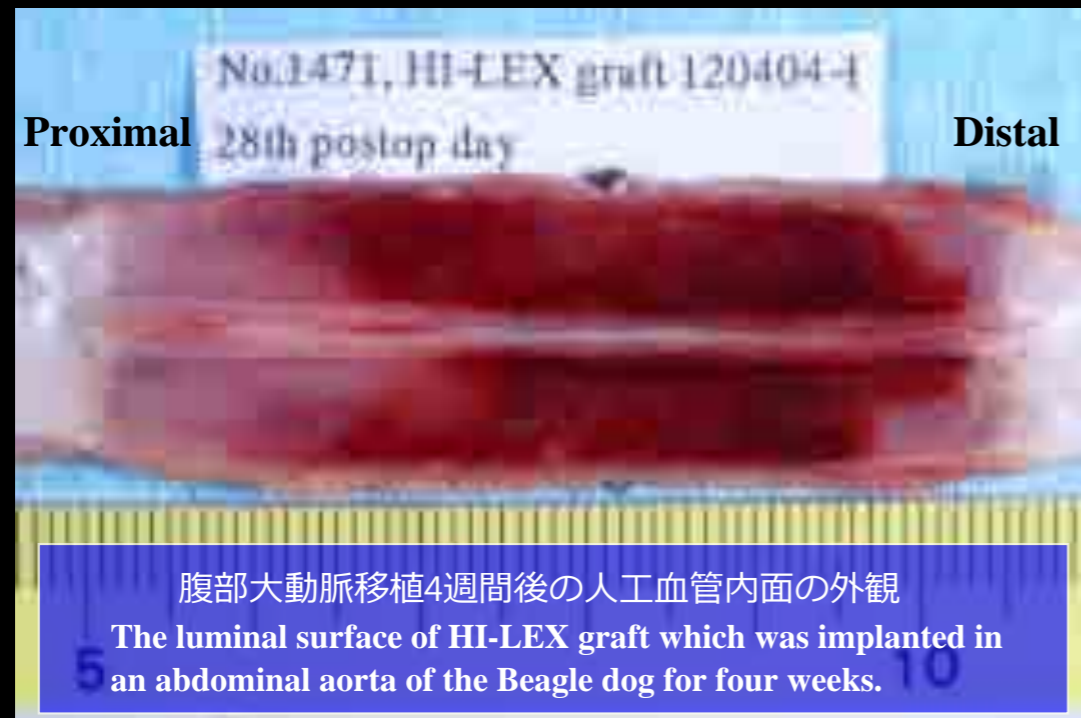


HI-LEX e-PTFE Vascular grafts



開発コンセプト ~高い開存率を目指して~

- ・人工血管の内面から外面まで繊維長60μmの構造
 - >多孔質壁内への細胞侵入性向上
 - >人工血管内面の内皮細胞化の上昇
 - >>血栓の薄肉化
- ・拡大しにくい縫合針穴
 - >針穴からの漏血少
- ・高い耐久性 (漏血圧,スーチャー引裂強度,破裂圧)
- ・優れた耐キンク性 (人工血管外面の凹凸構造の微細化)
- ・優れた操作性 (柔軟性を保ちつつしっかりとしたハンドリング性)

Feature of HI-LEX graft ~ Achieving high patency rate ~

- Exclusive pore size of 60μm from inside to outside.
 - >Increased penetration of cells within the wall of the graft.
 - >Improved endothelial cell coverage.
 - >>Thin and smooth fibrin layer.
- No ripping needle hole.
 - >Minimized suture line bleeding.
- Excellent durability. (Exceptional water entry pressure,suture retention and radial burst.)
- Improved kink resistance. (Micronizing the convex-concave portion on the surface of the graft.)
- Good in surgical procedure. (Optimal handling.)